



fermacell

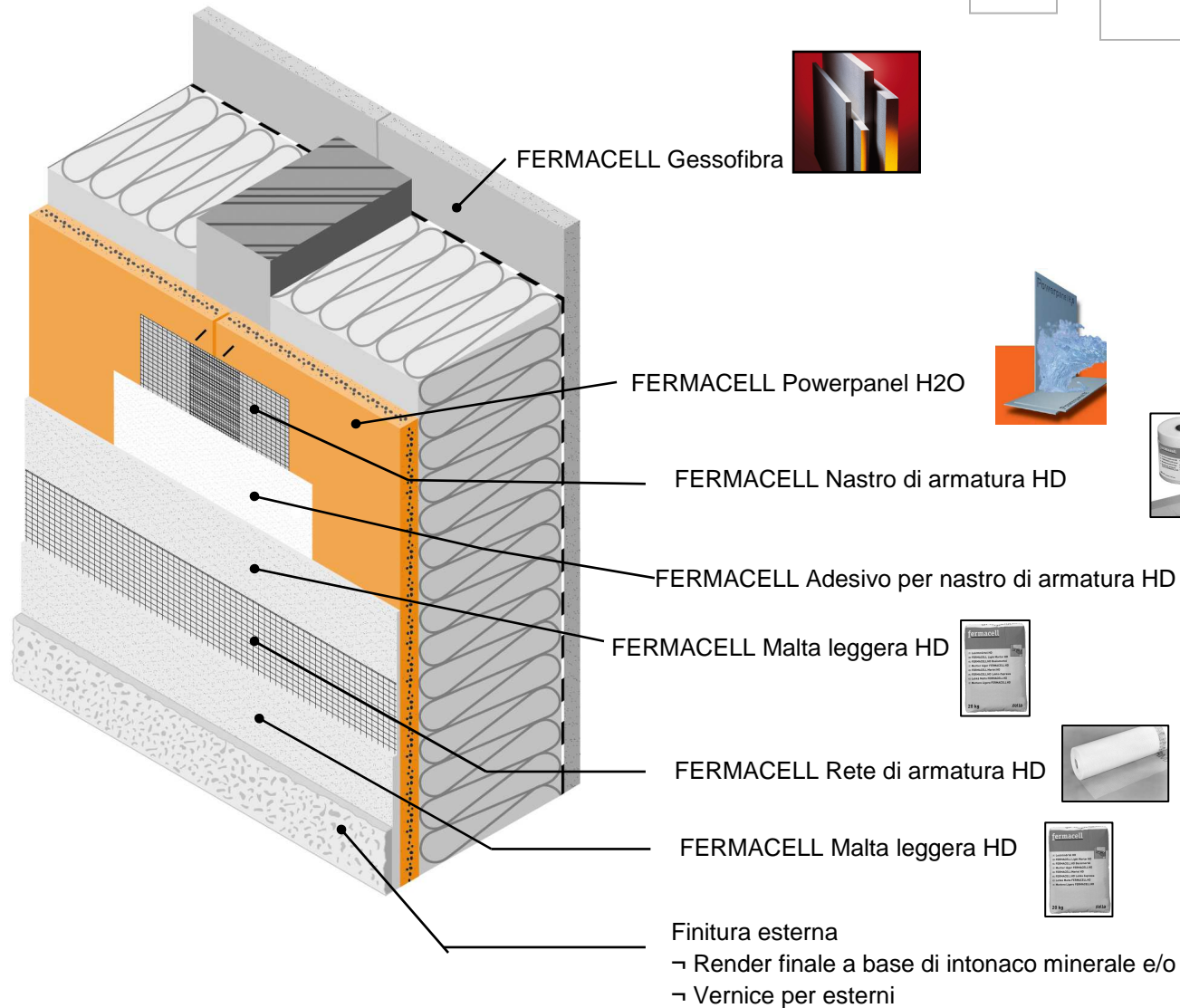


**Lastre cementizie Fermacell
Powerpanel H2O
Applicazioni in esterno**

fermacell

FERMACELL Powerpanel H2O

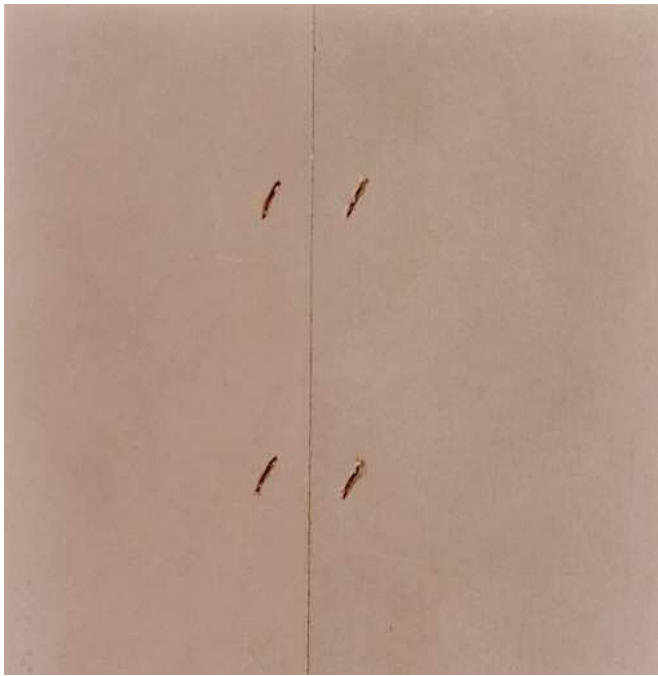
Applicazione in esterno: trattamento del giunto + finitura superficiale



Sistemi a Secco Fermacell – Lastre cementizie Powerpanel H2O – Applicazione in esterno

fermacell

FERMACELL Powerpanel H2O System accessories: HD Joint Reinforcement Tape/Adhesive



Sistemi a Secco Fermacell – Lastre cementizie Powerpanel H2O – Applicazione in esterno

fermacell

FERMACELL Powerpanel H2O System accessories: HD Joint Reinforcement Tape/Adhesive

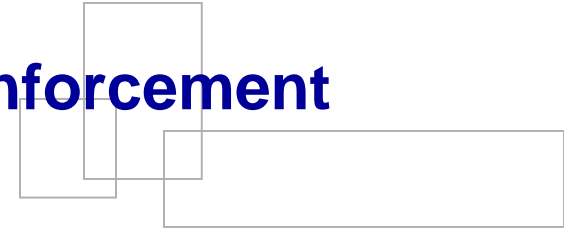


Sistemi a Secco Fermacell – Lastre cementizie Powerpanel H2O – Applicazione in esterno

fermacell

FERMACELL Powerpanel H2O

System accessories: HD Joint Reinforcement Tape/Adhesive



Reinforcing layer (base render layer)

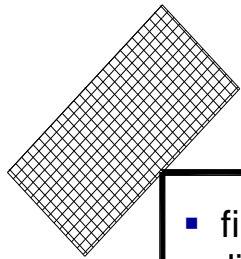
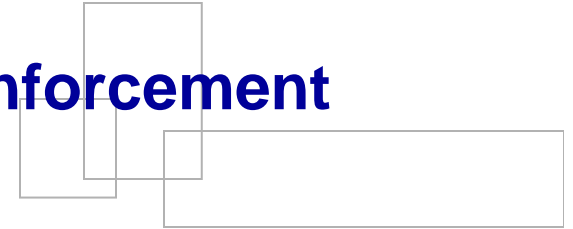
- Mix mortar with rendering machines or by hand (stirrer)
- Water amount per bag 7.5 – 8 l
- During processing and setting:
 - $\vartheta \geq 5 \text{ }^{\circ}\text{C}$, no rain, no direct sun (pre-wet the ground if necessary at high temperatures), no priming
- Apply with standard rendering machines or by hand with smoothing trowel
- Comb through with serrated trowel (tooth size 10 / 12 mm)
- Layer thickness: 5 – 6 mm (with embedded HD Reinforcing Mesh)
- No horizontal roughening!



fermacell

FERMACELL Powerpanel H2O

System accessories: HD Joint Reinforcement Tape/Adhesive



- first: diagonal reinforcement



Reinforcing Mesh

- Embed the mesh in mortar + smooth out (with wide smoothing trowel or serrated trowel; mesh joints with 10 cm overlap)
- Position in base render layer: outer third

Sistemi a Secco Fermacell – Lastre cementizie Powerpanel H2O – Applicazione in esterno

fermacell

FERMACELL Powerpanel H2O

System accessories: HD Joint Reinforcement Tape/Adhesive



Top render – Variant A (HD Light Render with felted surface)

- After at least 1 day setting time for base render layer apply Light Render and felt
- Layer thickness 2 – 3 mm

Top Render – Variant B (compatible, mineral structured top render)

- Structured top render acc. to manufacturer enabling list with max. grit size 3 mm
- Apply after base render layer has set (1 day per mm) screed and structure
- Pay attention to manufacturer's instructions!

Possibly exterior paint